

# Accessing Home-Based Learning (HBL) Assignments for P1-P6



# Objectives of HBL / e-learning



- To simulate school closure during emergencies and to ensure continual learning from home using SLS (Student Learning Space)
- To provide a different learning experience and to cultivate responsibility and self-directedness
- To enable students to be better equipped with
- the necessary ICT skills for future-readiness

# *What are the e-learning assignments?*

**P1 & 2: English, Math & Mother Tongue**

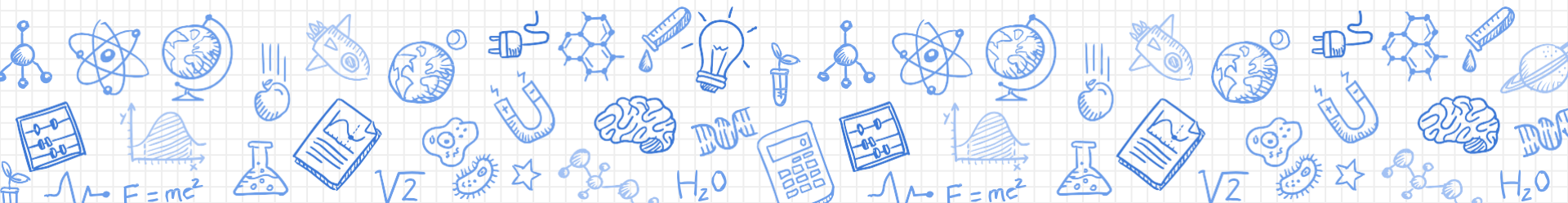
**P3-6: English, Math, Science & Mother Tongue**

# E-Learning Information

---

- Subject teachers will go through expectations of e-learning task with you.
- Subject teachers will be tracking your completion. You **must complete all assignments** assigned to you.
- Parents will be informed through Parents Gateway.

# Logging in to Student Learning Space (SLS)



# Gateway

Read More

## Introducing Parents Gateway

The easier way for schools to  
communicate with parents.



News & Announcements

Events

Help Your Child Succeed in Life

Please click on the title for more information.

STUDENT LEARNING SPACE

EVENT CALENDAR

Go to our school website <https://kranjipri.moe.edu.sg/>

Username: First 5 characters of name +  
Last 5 characters of BC No.

*Example: Sam Tan + T1234567D*  
**SAMTA4567D**

*(students should have it recorded  
down in their student handbook)*

Password: **Student2020**

*(unless otherwise changed by  
the student or the teacher)*

[Helpdesk](#) [Login Troubleshooting](#) [Terms of Use](#) [Privacy Statement](#)

Copyright © 2019 Ministry of Education, Singapore. All rights reserved.

SINGAPORE

# STUDENT LEARNING SPACE

LEARN ANYTIME, ANYWHERE, AT ANY PACE

Username

Password

[FORGOT PASSWORD](#)

[LOGIN](#)

# P1 to P3 Password Card

PASSWORDS		MARY TAN MEI LI (1 CO)		
Website / Account	Username	Password		
[Redacted]				
SLS	MARYT4567A	Student2020	[Redacted]	[Redacted]
[Redacted]				



# Frequently Asked Questions

---

1) I forgot my username. What should I do?

- Check that you have recorded your SLS username in your handbook
- Format of user name is first 5 characters of your name, and the last 5 characters of your BC number

# Frequently Asked Questions

---

2) I forgot my password. What should I do?

4 Ways to reset password:

- password reset using password reset link (in school website)
- password reset using security questions/verification email
- call the school to speak to the SLS administrator
- call the SLS Helpdesk at 67026513



# Thank You!

## **Any questions?**

Everything shared today  
will be uploaded to our  
school website